

AGENDA
HUMAN SERVICES COMMITTEE
TUESDAY, July 26, 2022 AT 9:00 A.M.

COMMITTEE MEMBERS: Lausell- Chairman, Rondinaro, Gray, Jaynes
ALSO PRESENT: Fonda Chronis, County Administrator
STAFF ADVISOR/MINUTES: Jamee Mack, Deputy Clerk

I. SOCIAL SERVICES/YOUTH BUREAU – JoAnn Fratarcangelo

Social Services:

- A. Resolution – Authorization to pay Family Foster Care and Adoption Subsidy Rates as determined by the New York State Office of Children and Family Services - Social Services Department (see attached)
- B. Motion to renew contract with Catholic Charities of the Diocese of Rochester dba Catholic Charities Chemung Schuyler for Housing Services for homeless, at the same cost of \$5,075.00, term of February 1, 2022 through January 31, 2023.
- C. Motion to renew contract with Schuyler County Attorney for Legal Services for Child Welfare matters at the cost of \$220,000.00, term of January 1, 2022 through December 31, 2022.
- D. Discussion - Outside counsel and funding.
- E. Statistics attached.
- F. Budget attached.

Youth Bureau:

- A. No action needed.

II. OFFICE FOR THE AGING - Tamre (Tammy) Waite

- A. Resolution - Authorize grant application and agreement with the New York State Office for the Aging for the New York Connects Expansion and Enhancement program – Office for the Aging Department (see attached)
- B. Discussion – Mileage reimbursement for meal deliverers.

III. PUBLIC HEALTH – Nancy King, M.D.

- A. COVID-19 update
- B. Resolution – Authorize five-year contract with New York State Department of Health for Childhood Lead Poisoning Prevention Program (CLPPP) Grant – Public Health Department (see attached)
- C. Resolution - Authorize amending grant contract with the New York State Department of Health through Health Research, Inc (HRI) for Epidemiology Laboratory Capacity (ELC) Grant to extend the term – Public Health Department (see attached)
- D. Resolution – Authorize contract with Venesky & Company for Jack – Time and Activity Tracking System end user license – Public Health Department (see attached)
- E. Resolution – Authorize transfer of funds from Contingency/Authorize amending the 2022 Budget for early Intervention – Public Health Department (see attached)
- F. Motion to renew contract with Juventas Physical, Occupational and Speech Therapy Services, PLLC for Related Preschool Services at an increased rate of \$69.00, an increase of \$2.00 from last year, per individual half hour session per child, and \$45.00 per group session, per child for Related Services Occupational Therapy, Physical Therapy, and Speech Therapy, term of July 1, 2022 through June 30, 2025.
- G. Discussion – Contract with NACCHO/RISE grant

IV. COMMUNITY SERVICES - Shawn Rosno

A. Discussion - contract with Flight Suit Medical for Psychiatric Nurse Practitioner & Medical Director.

V. VETERANS SERVICES – Joan Scott

A. Nothing submitted.

RE: AUTHORIZATION TO PAY FAMILY FOSTER CARE AND ADOPTION SUBSIDY RATES AS DETERMINED BY THE NEW YORK STATE OFFICE OF CHILDREN AND FAMILY SERVICES – SOCIAL SERVICES DEPARTMENT

WHEREAS, Resolution No. 233-16 established Schuyler County rates for family foster care and adoption subsidies, and

WHEREAS, the New York State Office of Children and Family Services (OCFS) mandated counties to pay at least 100% of Maximum State Aid Rates (MSARs) for foster care and adoption subsidies effective July 1, 2023, according to 22-OCFS-ADM-16 and Chapter 56 of the Laws of 2022 amending Social Services Law (SSL) §398-a by adding subdivision 2-c, and

WHEREAS, OCFS mandated three rate increases in the interim, from April 1, 2022 until July 1, 2023.

NOW, THEREFORE, BE IT RESOLVED, that the Schuyler County Department of Social Services is hereby authorized to pay foster care and adoption subsidy rates as directed by the New York State Office of Children and Family Services.

2020 Monthly Statistics

* **BOLD Type = Total** for 2019 or 2020

** Regular Type = Monthly Average

	Jan-22	Feb-22	Mar-22	Apr-22	May-22	Jun-22	Jul-22	Aug-22	Sep-22	Oct-22	Nov-22	Dec-22	2022 YTD* or Monthly AVG**	2021 YTD* or Monthly AVG**
<u>TEMPORARY ASSISTANCE (TA) - 8 staff authorized</u>														
<u>TANF - (Temp. Assistance for Needy Families) No. of Cases</u>	42	38	41	40	39	37							39.5	39.9
<i>No. of Persons</i>	73	67	78	69	67	64							70	69
TOTAL No. "Child-only" TANF Cases	36	34	35	37	35	35							35.3	36.3
TOTAL No. "One-Parent" TANF Cases	6	4	4	3	5	3							4.2	4.4
<u>Safety Net - (SN) TOTAL No. Cases</u>	50	44	52	44	47	47							47.3	58.3
<i>No. of Persons</i>	61	67	61	54	60	61							60.7	74.7
Single Individual-No. Cases	43	44	47	36	39	38							41.2	51.3
Family-No. of Cases	7	6	5	6	8	9							6.8	7.0
<i>No. of Persons</i>	18	16	14	16	21	23							18.0	23.3
<u>Emergency Assistance for Adults or Families No. Cases</u>	1	2	4	4	2	3							2.7	2.1
<i>Persons</i>	1	2	4	4	2	3							2.7	2.2
<u>Homeless - No. Cases</u>	20	24	19	15	6	7							15.2	18.0
<i>No. of Persons</i>	24	28	22	15	6	7							17.0	20.2
<u>Homeless Executive Order 151/ Code Blue No. Cases</u>	8	7	7	5	0	0							4.5	4.3
<u>Homeless Executive Order 151/ Code Blue No. Persons</u>	8	7	10	5	0	0							5.0	5.7
TOTAL No. of Temporary Assistance Cases	94	91	97	89	89	87							91.2	101.0
<u>Children on TA</u>	82	79	83	84	79	81							81.3	86.3
<u>Adults on TA</u>	54	53	58	48	52	47							52.0	58.7
TOTAL Number of Persons on TA	139	133	143	132	134	128							134.8	146.8
<u>Food Stamps - No. of Cases (food Stamp cases for those NOT on TA)</u>	1139	1161	1170	1157	1131	1113							1145.2	1082.6
<u>Adults on Food Stamps</u>	1375	1397	1405	1405	1386	1353							1386.8	1303.7
<u>Children on Food Stamps</u>	591	611	601	585	579	553							586.7	558.2
No. of Persons on Food Stamps	2027	2067	2076	2025	1959	1913							2011.2	1919.3
Day Care - No. of Cases	31	34	30		33	36							32.8	30.2
\$ Total Amount Day Care	\$ 24,266	\$ 24,044	\$ 23,851	\$ 27,296	\$ 24,570								\$ 124,027	\$ 264,531
\$ Amount Local Share	\$ 468	\$ 421	\$ 421	\$ 477	\$ 441								\$ 2,228	\$ 6,998
<u>HEAP (Home Energy Assistance Program) - No. of Cases</u>	693	714	741	760	762	767							739.5	696.8
<i>No. of Persons</i>	1590	1650	1725	1761	1775	1789							1715.0	1643.3
\$ Value of HEAP Payments	-\$23	\$21	\$7,831	\$21	\$63								\$7,913	\$5,427
<u>MEDICAID - 7 staff authorized</u>														
<u>MEDICAID No. Total Cases</u>	994	987	984	992	996	1005							993.0	971.8
<i>No. Persons</i>	1163	1158	1160	1172	1175	1185							1168.8	1134.5
No. Regular Cases	903	898	898	906	811	922							889.7	882.4
<i>No. Persons</i>	1072	1069	1074	1086	1080	1102							1080.5	1045.7
Chronic Care Cases (=1 Person per case)	91	89	86	86	85	83							86.7	89.3
SSI MEDICAID Cases (=1 Person per case)	436	438	442	449	452	442							443.2	434.8
TOTAL No. of MEDICAID Cases	1446	1437	1438	1453	1459	1458							1448.5	1422.5
TOTAL No. of Persons on MEDICAID	1615	1608	1614	1633	1638	1638							1624.3	1586.1
Children: unborn thru 18		62	62	61	61	55							60.2	7.4
Adults: 19 - 64		272	272	278	280	278							276.0	41.7

2020 Monthly Statistics

* **BOLD Type = Total** for 2019 or 2020
 ** Regular Type = Monthly Average

% of Cases with Paternity Established	99.0%	99.0%	98.6%	99.0%	94.9%								98.1%	98.5%
% of Cases with Medical Support Ordered	81.0%	82.0%	81.0%	78.0%	80.0%								80.4%	750.1%
LEGAL AFFAIRS - 3 staff authorized														
Fraud - Number of Incoming Referrals	5	7	19	11	42	23							107	115
Number of Computer Matches	0	0	15	6	3	8							32	63
Fraud - \$ Cost Avoidance from Referrals & Computer Matches	\$ 5,040	\$ 2,004	\$ 5,742	\$ 16,056	\$ 2,004	\$ 13,056							\$43,902	\$37,762
Fraud - \$ Value of Civil Resolution	\$ -	\$ 16,788	\$ 1,961	\$ 3,947	\$ 2,517	\$ 17,251							\$42,464	\$13,634
Fraud-\$ Value Criminal Prosecution (Conviction or Settlement)	\$ -	\$ 1,092	\$ -	\$ 15,789	\$ -	\$ 9,343							\$26,224	\$61,395
Fraud - \$ Cost Avoidance of IPV Sanctions	\$ -	\$ 4,536	\$ -	\$ 15,204	\$ 4,521	\$ 16,992							\$41,253	\$22,403
Fraud - Number of Arrests	1	4	0	1	2	0							8	12
Number of Criminal Cases Pending	17	21	21	15	18	13							18	14
\$ Value of Criminal Cases Pending	\$ 167,520	\$171,521	\$171,521	\$155,732	\$160,797	\$151,454							\$163,091	\$80,167
Tax Intercept (\$)	\$ -	\$ -	\$ 1,426	\$ 1,146	\$ 699	\$ 158							\$3,429	\$4,133
Lottery Intercept (\$)	\$ -	\$ -	\$ -	\$ -	\$ -	\$ -							\$0	=
Lien Recovery	\$0	\$ 100	\$ 50	\$ -	\$ 50	\$ 2,210							\$2,410	\$55,118
Cash Payments (\$)	\$ 637	\$ 851	\$ 845	\$ 4,674	\$ 4,450	\$ 12,092							\$23,549	\$40,341
Recoupments (\$) & Civil Fraud Value	\$ 8,362	\$ 1,459	\$ 2,002	\$ 1,579	\$ 1,758	\$ 2,823							\$17,983	\$25,941
SSI Interim Assistance Payments	\$ 1,605	\$ -	\$ 9,568	\$ -	\$ -								11,173	28,712
FEDS Referrals	30	24	27	16	10								107	255
FEDS Denials	1	10	6	15	13								45	112
FEDS Cost Avoidance (\$) for 6 months	\$ 9,366	\$ 18,732	\$ 28,098	\$ 46,830	\$ 33,942								\$136,968	\$348,528
Homeless Denials SN	3	4	6	7	7								27	57
Homeless Denials FA	0	0	0	0	1								1	7
FEDS Homeless Apps Not Placed Cost avoidance	\$14,850	\$19,800	\$29,700	\$34,650	\$35,550								\$134,550	\$311,400
RECEPTION - 2 staff authorized														
Client Walk-ins	472	410	544	441	403	447							2717	4705
Telephone Calls	2519	2283	2816	2220	2088	2171							14,097	23,642

2007 - 2019 Yearly Statistics

	2010 YTD* or Monthly AVG**	2011 YTD* or Monthly AVG**	2012 YTD* or Monthly AVG**	2013 YTD* or Monthly AVG**	2014 YTD* or Monthly AVG**	2015 YTD* or Monthly AVG**	2016 YTD* or Monthly AVG**	2017 YTD* or Monthly Average	2018 YTD* or Monthly Average	2019 YTD* or Monthly Average	2020 YTD* or Monthly Average	2021 YTD* or Monthly Average	2022 YTD* or Monthly Average	
TEMPORARY ASSISTANCE (TA) -														TEMPORARY ASSISTANCE (TA) - 8 staff authorized
TANF - (Temp. Assistance for Needy Families) No. of Cases//No. of Persons	98/240	104/259	98/244	103/251	91.3/237.6	94.5/240.5	83.1/202.5	71.1	70.3	59.2	50.0	39.9	39.5	TANF - No. of Cases
TOTAL No. "Child-only" TANF Cases	38	42.0	41.3	43.0	33.5	38.4	41.2	173.0	166.7	128	94	69	70	No. of Persons
TOTAL No. "One-Parent" TANF Cases	48.5	49.2	48.3	49.0	51.3	52.0	40.6	38.3	39.2	41.7	41.3	36.3	35.3	TOTAL No. "Child-only" TANF Cases
Safety Net - (SN)	74/102	79/106	79/104	99/131	114.2/160.8	114.8/159.5	104.6/134.7	30.7	28.8	16.7	8.2	4.4	4.2	TOTAL No. "One-Parent" TANF Cases
Individual-No. Cases/No. of Persons	62/62	68/68	67/67	83/83	95.8/95.8	93.5/93.5	90/90	81.7	#REF!	70.3	68.8	58.3	47.3	Safety Net- TOTAL No. Cases
Family-No. of Cases/No. of Persons	12/40	12/38	12/36	15/54	181.65	21.3/66	13.9/42.1	106.3	96.1	102.0	87.8	74.7	60.7	No. of Persons
								72.6	63.9	58.2	61.8	51.3	41.2	Single Individual-No. Cases
								9.3	8.8	12.9	6.9	7.0	6.8	Family-No. of Cases
								33.1	31.7	43.8	25.9	23.3	18.0	No. of Persons
								3.0	3.7	3.5	3.2	2.1	2.7	Emergency Assistance for Adults or Families Cases/Persons
								3.0	3.7	4.5	3.3	2.2	2.7	No. of Persons
								8.7	14.3	18	20	18.0	15.2	Homeless - No. Cases
								10.9	18.4	24	23	20.2	17.0	No. of Persons
								0.7	4.6	4.4	4.0	4.3	4.5	Homeless Executive Order 151/ Code Blue No. Cases
								4.9	5.8	3.8	5.7	5.0	5.7	Homeless Executive Order 151/ Code Blue No. Persons
TOTAL No. of Temporary Assistance Cases	171.4	184.5	179.4	204.5	204.5	211.5	189.2	156.2	145.3	133.8	121.9	101.0	91.2	TOTAL No. of Temporary Assistance Cases
TOTAL Number of Children/Adults on TA	187/136	201/151	205/146	218/171	214.4/180.1	221/183.4	193.1/154	165.0	156.9	137.1	103.1	86.3	81.3	Children on TA
TOTAL Number of Persons on TA	342.3	366.3	350.2	385.8	406.8	402.3	340.0	117.4	105.1	90.4	79.3	58.7	52.0	Adults on TA
Food Stamps - No. of Cases (see note 1)	980.0	1108.4	1137.3	1214.3	1193.4	1116.8	1103.8	282.0	266.3	235.0	185.1	146.8	134.8	TOTAL Number of Persons on TA
No. of Persons on Food Stamps	2097	2339.9	2334.3	2458.1	23503.0	2159.5	2106.3	1104.7	1066.5	1088.9	1096.8	1082.6	1145.2	Food Stamps - No. of Cases (persons not on PA)
Children/Adults on Food Stamps	748/1230	806/1400	766/1417	748/1428	738.3/1473	695.9/1434	665.5/1394.4	2087.3	1905.3	1310.7	1322.2	1303.7	1386.8	Adults of Food Stamps
Day Care - No. of Cases	100.8	82.1	78.3	61.3	49.8	58.3	58.5	662.3	588.6	573.0	546.3	558.2	586.7	Children on Food Stamps
\$ Total Amount Day Care with admin.	\$ 582,397	\$ 535,235	\$ 459,140	\$ 335,853	\$ 337,999	\$ 363,555	\$ 422,748	1401.3	1231.8	1317	1919.3	1919.3	2011.2	No. of Persons on Food Stamps
\$ Amount Local Share	\$ 13,123	\$ 19,892	\$ 10,300	\$ 4,257	\$ 4,097	\$ 12,867	\$ 26,769	58.1	50.1	56.3	43.0	30.2	32.8	Day Care - No. of Cases
HEAP - No. of Cases//No. of Persons	1077/2458	1098/2533	976/2275	818/1821	739.2/1725	791.6/1857.7	737.8/739.3	707.8	701.8	725.1	734.0	696.8	739.5	HEAP (Home Energy Assistance Program)* No. of Cases
\$ Value of HEAP Payments	\$ 11,480	\$ 202	\$ (15)	\$ 2,104	\$ 5,737	\$ (2,751)	\$ 3,702	1691.6	1686.1	1731.2	1732.6	1643.3	1715.0	No. of Persons
MEDICAID -														MEDICAID - 5 staff authorized
MEDICAID Cases (Regular)//No. Persons	1348/2099	1426/2216	1576/2419	1658/2516	1539/2486	1405/2255	1266.6/1946.5	968.3	846.6	839.9	892.7	971.8	993.0	MEDICAID No. Total Cases
Regular Cases//No. Persons	1266/2017	1349/2131	1495/2338	1567/2425	1501/2392	1305/2155	1186.3/1850.3	1243.1	995.8	961.3	1022.1	1134.5	1168.8	No. Regular Cases
Skilled Nursing Cases//No. Persons	82/82	77/77	81/81	90/90	95/95	100/100	97.3/97.3	888.3	762.6	748.8	799.0	882.4	889.7	No. Persons
SSI MEDICAID Cases//No. of Persons	490/490	492/492	481/481	487/487	501.1/501.1	481.1/481.1	489.6/489.6	1156.8	901.8	870.1	918.9	1045.7	1080.5	Chronic Care Cases (=1 Person per case)
TOTAL No. of MEDICAID Cases	2065.9	2167.6	2314.8	2448.2	2233.1	1937.1	1812.0	465.2	464.3	452.3	437.8	434.8	443.2	SSI MEDICAID Cases (=1 Person per case)
TOTAL No. of Persons on MEDICAID	3086.8	3265.8	3545.4	3746.2	3303.5	2760.8	2493.3	1494.7	1357.8	1337.5	1362.3	1422.5	1448.5	TOTAL No. of MEDICAID Cases
Children: unborn thru 18	741.2	795.2	851.4	868.5	819.4	771.3	323.3	1769.4	1507.0	1458.8	1493.3	1586.1	1624.3	TOTAL No. of Persons on MEDICAID
Adults: 19 - 64	1084.9	1187.3	1305.3	1372.0	1225.3	1018.5	466.4	13.1	5.2	4.08	7.2	7.4	60.2	Children: unborn thru 18
Adults: 65 & older	293.6	312.5	335.4	359.3	384.1	395.3	240.8	109.9	88.6	83.2	58.2	41.7	276.0	Adults: 19 - 64
Disabled - Children, Adults, Seniors (SSI)	487	488.9	479.3	487.8	384.1	478.3	469.2	132.1	123.8	126.2	137.0	144.9	106.0	Adults: 65 & older
Managed Care Enrollees - No. Persons	149.5	142.3	717.1	2069.1	2236.5	2948.6	3024.8	458.2	453.4	446.8	437.6	433.4	441.0	Disabled on SSI - Children, Adults, Seniors
No. of County Burials Approved/Paid For	24/13	19/9	14/11	15	16	13	17	3,029.1	3,142.8	3114.8	3244.8	3665.2	3812.8	Managed Care Enrollees - No. Persons
Total Cost of County Burials	\$ 17,343	\$ 17,732	\$ 19,302	\$ 13,204	\$ 39,316	\$ 50,177	\$ 48,685	32	34	17	20	24	16.0	No. of County Burials Approved/Paid For
CHILDREN'S SERVICES - SCR State Central Registry														Total Cost of County Burials
PROTECTIVE - SCR (HOTLINE) Calls	409	430	393	388	345	389	354	314	328	334	285	279.0	131.0	CHILDREN'S SERVICES - 11 Staff Authorized
SCR Open Cases	102	64.3	42.9	40.8	49.3	76.0	64.0	46.8	44.3	44	37.2	41.3	31.3	PROTECTIVE - SCR (State Central Registry - Hotline) Calls
PREVENTIVE - Referrals	34	28	39	42	43	48	25	25	23	16	15	18	14	SCR Open Cases
Open Cases	26.3	27.8	42.3	47.6	48.3	34.4	31.9	31.0	41.3	39.3	31.8	35.50	37	PREVENTIVE - Referrals
COURT CASES														Open Cases
New Petitions	32	42	45	62	58	67	56	41	39	38	43	38	19	COURT CASES
FOSTER CARE CHILDREN														New Petitions
In DSS Custody	9.9	12.3	23.0	23.0	15.4	13.0	24.1	23.0	22.1	22.8	20.3	21.7	26.33333333	FOSTER CARE CHILDREN
Not in Custody but Fin. Resp.	2.2	2.3	2.5	1.8	1.3	1.2	0.6	0.0	1.0	0.7	1.0	1	0.5	In DSS Custody (# of children)
ADULT SERVICES -														Not in Custody but Fin. Resp.
Referrals	151	175	171	193	170	210	191	219	225	224	185	276	138	ADULT SERVICES - 4.5 staff authorized
Open Cases	128.5	130.8	129.3	145.5	176.3	221.9	175.2	154.2	166.2	174.1	173.8	176.3	159.3	Referrals
Guardianships - Active/Inactive	4/1	3/2	3/2	3.0	2.4	3.6	2.9	22.8	25.6	33	35.5	38.9	51.0	Open Cases
EMPLOYMENT -														Assisted Living
Referrals	125	141	117	163	119	122	87	2	2	2	2.0	2	1	Guardianships - Active/Inactive
														EMPLOYMENT - 4.5 staff authorized

2007 - 2019 Yearly Statistics

No. Participants/No. Employable-TANF	38//47	32//46	42//53	37//61	31.5//48.8	26.3//49.3	18.5//29.4	15.0	20.5	37.3	19.3	14.0	18	TANF No. Participants	
								20.6	6.5	15.8	7.3	5.5	8	TANF No. Employable	
No. Participants/No. Employable-SN	22//36	28//39	21//37	24//55	35.5//67.5	29.5//59.5	18.2//30.5	11.7	27.0	63.3	67.3	55.3	49	SN No. Participants	
								15.9	9.6	24.1	34.9	16.8	15	SN No. Employable	
No. Entered Employment TANF/SN	63	67	40	63	81	85	57	46	39	21	19	7	8	No. Entered Employment TANF/SN	
Eligible for Mobile Work Crew-TANF//SN	11	8.9	9.0	10.0	4.7	11.3	6.5	3.2	5.2	3.4	3.4	0	N/A	Eligible for Mobile Work Crew-TANF//SN	
Mobile Work Crew - hours program discontinued	6,085	4,332	3,095	5,126	5,715	4,234	3,227	2387	3079	2416	0.6	0.0	N/A	Mobile Work Crew - hours	
Total No. of SSI Cases											21	278	16	12	Total No. of SSI Cases
Total No. of SSI Cases Denied by SS											21	15.3	17	3	Total No. of SSI Cases Denied by SS
Total No. of SSI Cases Approved by SS											11	9	5	0	Total No. of SSI Cases Approved by SS
No. of SN/TANF Cases Closed Because SSI Was Awarded											11	6	2	0	No. of SN/TANF Cases Closed Because SSI Was Awarded
Total Cost Savings Because SSI Was Awarded											\$43,766	\$23,681	\$31,488	\$0	Total Cost Savings Because SSI Was Awarded
SUPPORT COLLECTION -														SUPPORT COLLECTION - 4 staff authorized	
\$ Reimbursement to DSS (Net)	\$ 189,484	\$ 186,086	\$ 183,512	\$ 186,718	\$ 180,853	\$ 170,682	\$ 154,592	\$ 116,713	\$ 131,174	\$ 144,579	\$ 193,687	\$ 161,478	59349	\$ Reimbursement to DSS (Net)	
Collections	\$ 2,159,002	\$ 2,185,504	\$ 2,189,328	\$ 2,276,113	\$ 2,185,254	\$ 2,215,994	\$ 2,091,897	\$ 1,822,275	\$ 1,999,018	\$ 1,864,919	\$ 2,069,803	\$ 1,861,900	669334	Collections	
Temporary Ass't cases w/orders	183.2	193.2	204.9	223.4	226.8	218.1	225.3	174.7	158.5	125.9	102.3	91.1	79	Temporary Ass't cases w/orders	
Non-Temp. Ass't cases w/orders	1070	1069.3	1092.6	988.3	1115.4	1091.5	1104.8	1129.9	1111.4	944.6	820.3	775.2	714	Non-Temp. Ass't cases w/orders	
No. of Support Cases (with or w/o orders)	1405.8	1432	1464.7	1505.6	1523.7	1560.1	1599.2	1451.7	1442.0	1103.1	978.6	910.1	855	No. of Support Cases (with or w/o orders)	
% of Cases with Paternity Established	96.9%	96.3%	97%	96%	97%	97%	96%	96.2	1.0	97.7%	98%	98.5%	98%	% of Cases with Paternity Established	
% of Cases with Medical Support Ordered	85.7%	85.3%	84%	83%	83%	82%	81%	79.7%	78.9%	81.9%	82%	750.1%	80%	% of Cases with Medical Support Ordered	
LEGAL AFFAIRS -														LEGAL AFFAIRS - 3 staff authorized	
Fraud - No. Incoming Referrals/No. Computer Match	89//103	75//79	89	60//114	119//92	112//85	119//83	95	94	117	91	115	107	Fraud - Number of Incoming Referrals	
								57	47	62	78	63	32	Number of Computer Matches	
								\$60,306	\$82,098	\$106,474	\$106,008	\$37,762	43902	Fraud - \$ Cost Avoidance from Referrals & Computer Matches	
Fraud - \$ Value (CONVICTIONS)	\$ 5,159	\$ 77,460	\$ 34,987	\$ 10,328	\$ 6,941	\$ 32,402	\$ 9,841	\$9,208	\$29,649	\$5,352	\$106,008	\$37,762	42464	Fraud - \$ Value (CONVICTIONS)	
Fraud - \$ Cost Avoidance of Sanctions	\$ 20,004	\$ 17,208	\$ 31,128	\$ 1,692	\$ 1,692	\$ 43,698	\$ 22,494	\$20,912	\$38,928	\$22,152	\$11,366	\$13,634	26224	Fraud - \$ Cost Avoidance of Sanctions	
Fraud - Number of Arrests	4	5	3	4	18	17	10	9	8	7	6	12	41253	Fraud - Number of Arrests	
								8	10	13	15	14	19	Number of Criminal Cases Pending	
								17469	33,046	\$40,926	\$65,164	\$80,167	163091	\$ Value of Criminal Cases Pending	
Tax Intercept (\$)	\$ 5,071	\$ 3,815	\$ 2,001	\$ 4,456	\$ 7,460	\$ 3,124	\$ 3,124	\$2,764	\$1,505	\$ 1,354.00	\$ -	4133	3429	Tax Intercept (\$)	
Lotto Intercept (\$)	\$ 794	\$ 3,540	\$ 854	\$ 5,472	\$ 884	\$ 850	\$ 1,146	\$546	\$0	\$ 789	\$ 0	1520	0	Lotto Intercept (\$)	
Lien Recovery	\$ 9,938	\$ 35,246	\$ 133,196	\$ 10,128	\$ 125,930	\$ 94,755	\$ 32,655	\$70,835.00	61,572	\$ 141,252	\$ 28,406	\$55,118	2410	Lien Recovery	
Cash Payments (\$)	\$ 28,309	\$ 8,850	\$ 17,294	\$ 23,542	\$ 24,482	\$ 42,425	\$ 27,019	\$21,225.00	\$ 19,803.00	\$26,220	\$28,516	\$40,341	23549	Cash Payments (\$)	
Recoupments (\$) & Civil Fraud Value	\$ 9,210	\$ 3,793	\$ 33,917	\$ 27,845	\$ 26,969	\$ 27,381	\$ 23,800	\$21,118	\$16,366	\$18,324	\$28,406	\$55,118	23549	Recoupments (\$) & Civil Fraud Value	
SSI Interim Assistance Payments	\$ 50,371	\$ 36,648	\$ 31,008	\$ 70,957	\$ 42,011	\$ 32,987	\$ 37,598	\$14,706	\$54,362	\$83,371	\$28,516	\$40,341	17983	SSI Interim Assistance Payments	
FEDS Referrals	60	47	107	106	80	139	160	343	325	392	19,453	25,941	11173	FEDS Referrals	
FEDS Denials	8	11	11	19	10	39	61	295	135	170	28,939	28712	107	FEDS Denials	
FEDS Cost Avoid. for 6 mo.	\$ 66,486	\$ 123,426	\$ 105,882	\$ 193,170	\$ 309,185	\$ 571,837	\$ 791,004	\$464,344	\$327,240	\$637,092	\$223	255	136968	FEDS Cost Avoid. 6 mo.	
								75	67	69	43	57	27	Homeless Denials SN	
								22	12	13	3	7	1	Homeless Denials FA	
FEDS Homeless Apps. Not Placed Cost Avoidance	\$ 265,104	\$ 125,118	\$ -	n/a	\$ 326,700	\$ 513,400	\$ 630,859	\$394,850	\$462,150	\$209,880	\$311,400		134550	FEDS Homeless Apps. Not Placed Cost Avoidance	
RECEPTION -														RECEPTION - 2 staff authorized	
Client Walk-ins	14,012	14,649	16,930	17,509	14,866	13,898	11,044	12,815	13,633	15,175	7,253	4,705	2717	Client Walk-ins	
Telephone Calls	39,039	39,485	39,487	39,645	33,091	30,524	20,541	29,249	32,632	30,626	25,933	23,642	14097	Telephone Calls	

Source of Hotlines

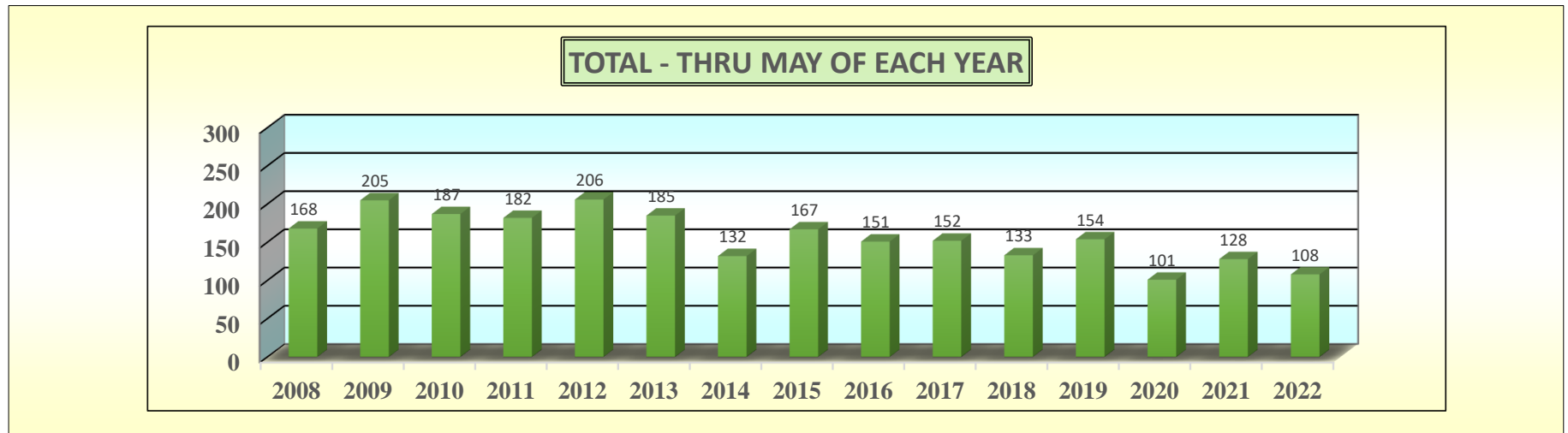
Sources	Jan-22	Feb-22	Mar-22	Apr-22	May-22	Jun-22	Jul-22	Aug-22	Sep-22	Oct-22	Nov-22	Dec-22	2022 TOTAL	Percent of TOTAL
Schools	3	7	11	6	7								34	31.5%
Mental Health	2	1	2	1	1								7	6.5%
Court	1	1	2	3	1								8	7.4%
Medical	2	2	3	1	1								9	8.3%
Law Enforcement	2	1	1	2	4								10	9.3%
DSS	0	0	0	0	0								0	0.0%
Community Agency	0	0	1	0	1								2	1.9%
SUB-TOTAL	10	12	20	13	15	0	0	0	0	0	0	0	70	64.8%
Non-Mandated Reporters														
Family/Friend	3	6	1	2	3								15	13.9%
Concerned Citizen	3	4	2	3	1								13	12.0%
Anonymous	2	1	1	3	3								10	9.3%
SUB-TOTAL	8	11	4	8	7	0	0	0	0	0	0	0	38	35.2%
TOTAL														
TOTAL	18	23	24	21	22	0	0	0	0	0	0	0	108	100.0%

CPS Annual/Monthly Stats Including Indicated Reports 2006-2020

	MONTH												ANNUAL		INDICATED		MAY	
	Jan	Feb	Mar	Apr	May	Jun	Jul	Aug	Sep	Oct	Nov	Dec	TOTAL	% CHANGE	No.	PERCENT	TOTAL	% CHANGE
2008	37	26	43	31	31	39	34	26	35	40	25	29	396	#REF!	132	33.3%	168	#REF!
2009	38	40	51	37	39	23	34	42	34	24	30	37	429	1.08%	137	31.9%	205	22.02%
2010	32	22	45	36	52	40	22	35	38	31	28	28	409	8.33%	157	38.4%	187	-8.78%
2011	30	24	47	38	43	26	35	38	41	44	40	24	430	-4.66%	132	30.7%	182	-2.67%
2012	38	44	39	40	45	27	25	32	25	24	29	25	393	5.13%	138	35.1%	206	13.19%
2013	43	33	30	34	45	26	27	32	35	25	25	33	388	-8.60%	138	35.6%	185	-10.19%
2014	28	31	31	42	34	26	23	24	31	27	21	27	345	-1.27%	138	40.0%	132	-28.65%
2015	41	21	38	32	35	22	40	29	32	47	24	28	389	-11.08%	87	22.4%	167	26.52%
2016	36	17	31	36	31	37	25	25	30	26	30	30	354	12.75%	133	37.6%	151	-9.58%
2017	44	28	27	37	16	35	21	25	17	27	20	17	314	-9.00%	114	36.3%	152	0.66%
2018	24	21	33	22	33	23	24	28	31	39	23	8	309	-11.30%	81	26.2%	133	-12.50%
2019	31	26	34	28	35	27	20	18	20	39	33	23	334	-1.59%	70	21.0%	154	15.79%
2020	34	16	21	14	16	19	29	15	18	32	36	35	285	8.09%	60	21.1%	101	-34.42%
2021	23	20	32	20	33	18	16	25	21	31	22	18	279	-14.67%	59	21.1%	128	26.73%
2022	18	23	24	21	22								108		31	28.7%	108	6.93%
AVERAGE	33.13	26.13	35.07	31.2	34	27.71	26.79	28.14	29.14	32.57	27.57	25.86		n/a				

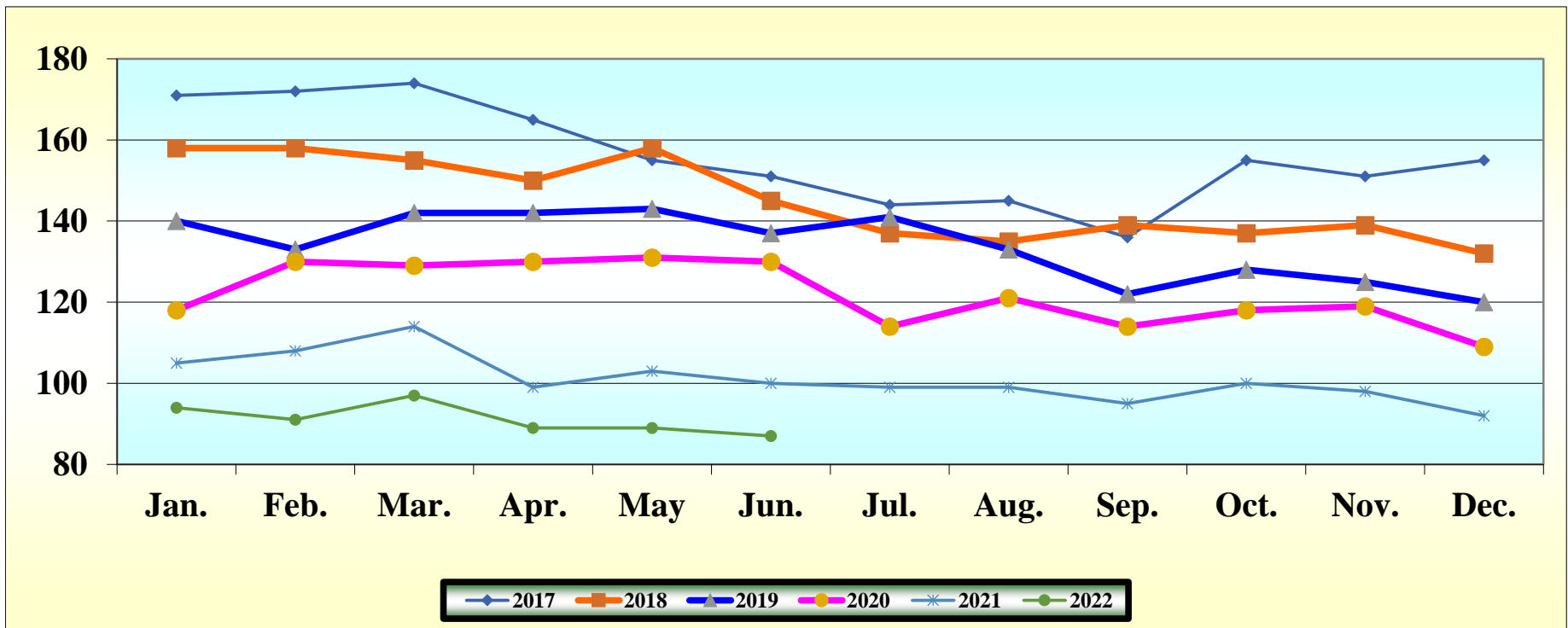
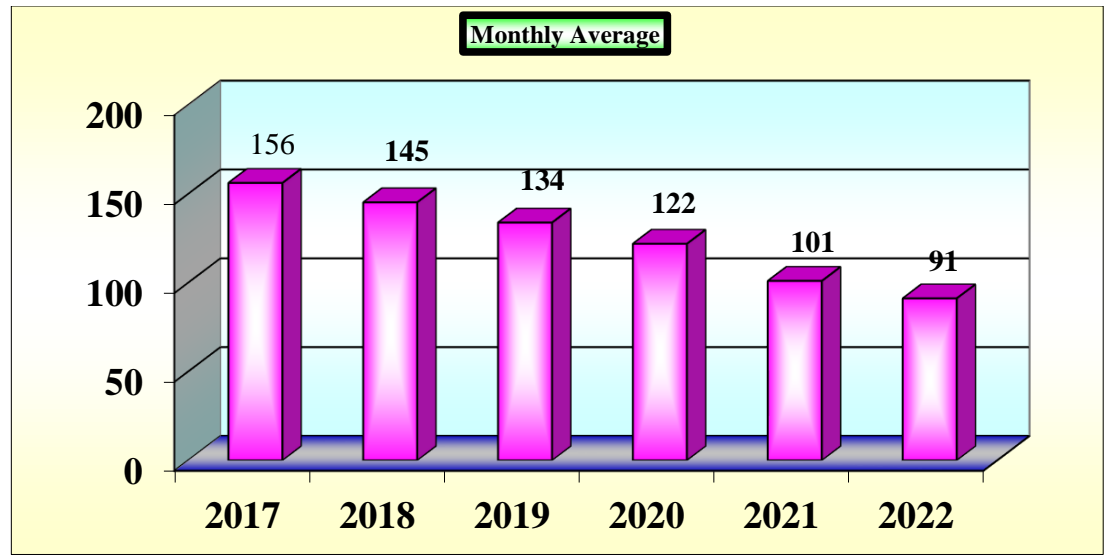
CELLS TO CHANGE MONTHLY: B20-M20; S1; Chart Title

CELLS TO CHANGE ANNUALLY: N19; S19



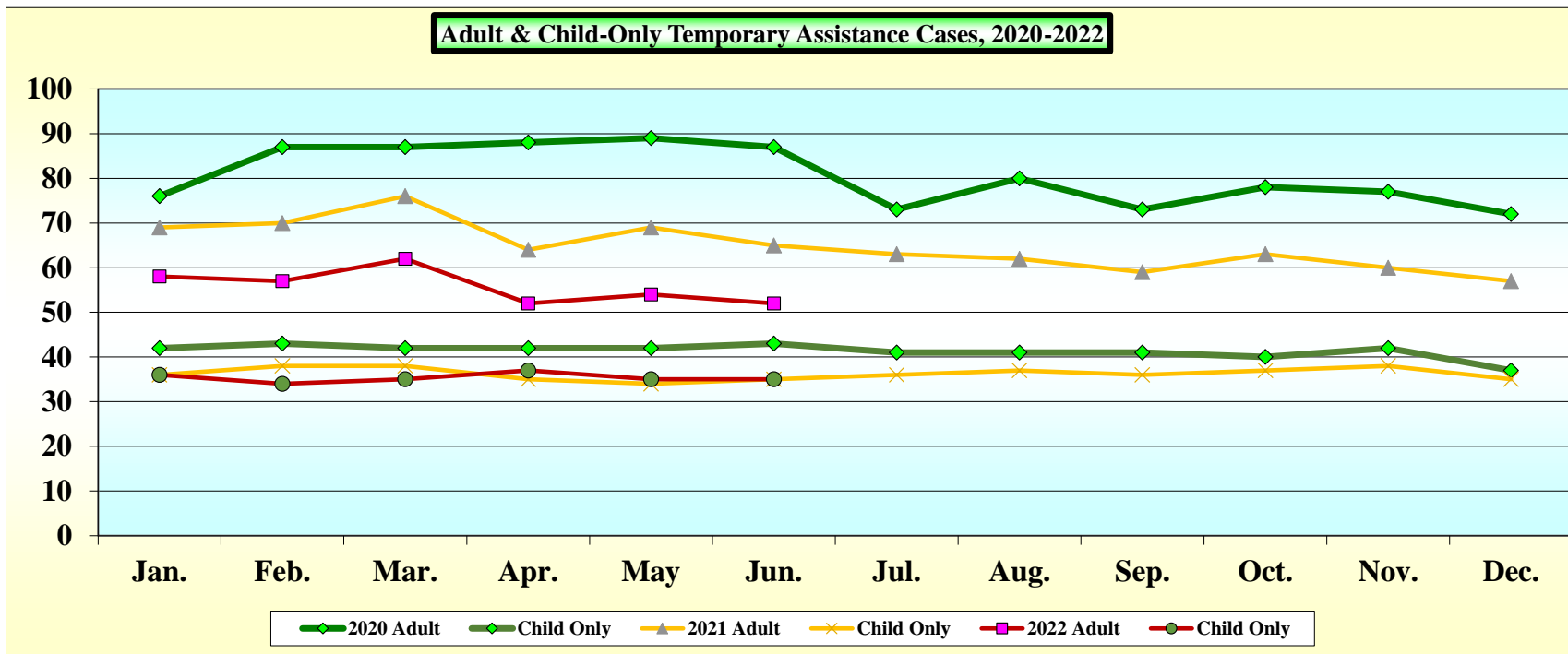
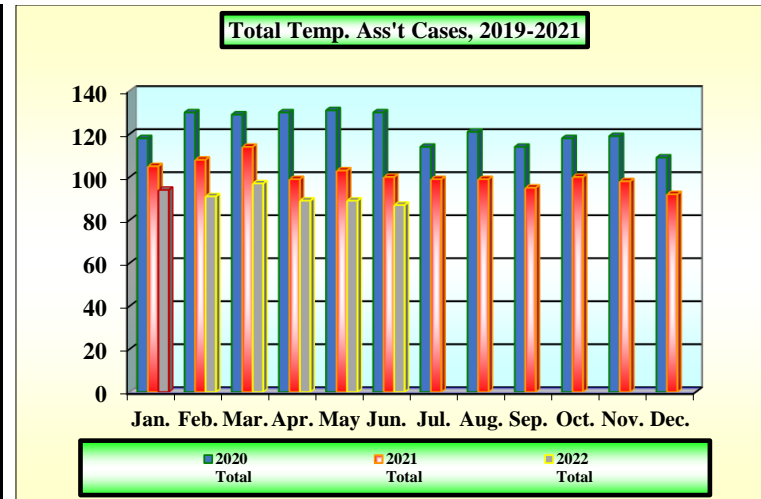
Number of Public Assistance Cases 2017 - 2022

	2017	2018	2019	2020	2021	2022
Jan.	171	158	140	118	105	94
Feb.	172	158	133	130	108	91
Mar.	174	155	142	129	114	97
Apr.	165	150	142	130	99	89
May	155	158	143	131	103	89
Jun.	151	145	137	130	100	87
Jul.	144	137	141	114	99	
Aug.	145	135	133	121	99	
Sep.	136	139	122	114	95	
Oct.	155	137	128	118	100	
Nov.	151	139	125	119	98	
Dec.	155	132	120	109	92	
Average	156	145	134	122	101	91



Adult and Child-Only Public Assistance Cases 2019-2021

	2020	Child	2020	2021	Child	2021	2022	Child	2022
	Adult	Only	Total	Adult	Only	Total	Adult	Only	Total
Jan.	76	42	118	69	36	105	58	36	94
Feb.	87	43	130	70	38	108	57	34	91
Mar.	87	42	129	76	38	114	62	35	97
Apr.	88	42	130	64	35	99	52	37	89
May	89	42	131	69	34	103	54	35	89
Jun.	87	43	130	65	35	100	52	35	87
Jul.	73	41	114	63	36	99			
Aug.	80	41	121	62	37	99			
Sep.	73	41	114	59	36	95			
Oct.	78	40	118	63	37	100			
Nov.	77	42	119	60	38	98			
Dec.	72	37	109	57	35	92			



SCHUYLER COUNTY
DEPARTMENT OF SOCIAL SERVICES
REPORT FOR THE MONTH OF JUNE 2022

REPORT FOR THE MONTH OF JUNE 2022

Social Services	2022 Budget	YTD	%	%/yr
Revenue	(7,932,750)	(2,240,687)	28%	50%
Total Revenue	(7,932,750)	(2,240,687)	28%	
Expense				
Salaries	6010.100	2,499,075	1,084,897	43%
Equipment	6010.200	88,000	48,153	55%
Contractual	6010.400	2,325,091	205,190	9%
Day Care	6055.400	500,000	89,560	18%
Protective & Preventive	6070.400	507,676	28,502	6%
MMIS	6100.400	3,500,000	1,598,382	46%
Medical Assistance	6101.400	50,000	-	0%
Adult Homes	6106.400	-	-	****
FA, EAF FC	6109.400	1,506,000	417,813	28%
FC, AS, CSE	6119.400	1,110,000	470,105	42%
JD	6123.400	700,000	-	0%
State Training Schools	6129.400	-	-	****
Safety Net	6140.400	750,000	221,233	29%
HEAP	6141.400	10,000	5,900	59%
EAA	6142.400	25,000	6,389	26%
Total Expense	13,570,842	4,176,123	31%	
Net Local Share	5,638,092	1,935,436	34%	

RE: AUTHORIZE GRANT APPLICATION AND AGREEMENT WITH THE NEW YORK STATE OFFICE FOR THE AGING FOR THE NEW YORK CONNECTS EXPANSION AND ENHANCEMENT PROGRAM – OFFICE FOR THE AGING

WHEREAS, Schuyler County has a New York (NY) Connects program within the Office for the Aging which serves as the local Aging and Disability Resource Center for individuals from birth to death with long term care or chronic healthcare issues, and

WHEREAS, NY Connects is an essential component of the State's efforts to rebalance the Long-Term Services and Supports (LTSS) system to increase access to non-institutional community-based long-term services and supports, and

WHEREAS, the purpose of the Expansion and Enhancement funding is to broaden the scope and involve new partners to produce a fully functional No Wrong Door structural reform as required under the federal Balancing Incentive Program (BIP) authorized under the Patient Protection and Affordable Care Act of 2010.

NOW, THEREFORE, BE IT RESOLVED, that the Chairman of the Legislature be hereby authorized to sign a grant application and agreement with the New York State Office for the Aging for the Expansion and Enhancement of NY Connects program grant funds, for the term April 1, 2022 through March 31, 2023, in the amount of \$144,194.00, and

BE IT FURTHER RESOLVED, that the Schuyler County Treasurer is hereby directed to establish the NY Connects program grant accordingly in cooperation with the Office for the Aging Department.

RE: AUTHORIZE FIVE-YEAR CONTRACT WITH THE NEW YORK STATE DEPARTMENT OF HEALTH FOR A CHILDHOOD LEAD POISONING PREVENTION PROGRAM (CLPPP) GRANT – PUBLIC HEALTH DEPARTMENT

WHEREAS, the New York State Department of Health (NYSDOH) has awarded the Public Health Department a Childhood Lead Poisoning Prevention Program (CLPPP) grant, contract number DOH01-C37014GG-3450000, for the period of October 1, 2021 through September 30, 2026, in the amount of \$24,600.00 for each year with a grand total of \$123,000.00 for the five years.

NOW, THEREFORE, BE IT RESOLVED, that the Chairman of the Legislature is hereby authorized to execute said grant contract with the NYSDOH for said funding, contract number DOH01-C37014GG-3450000, and

BE IT FURTHER RESOLVED, that the Schuyler County Treasurer is hereby directed to establish the funding for said grant, in cooperation with the Public Health Department.

RE: AUTHORIZE AMENDING GRANT CONTRACT WITH THE NEW YORK STATE DEPARTMENT OF HEALTH THROUGH HEALTH RESEARCH, INC. (HRI) FOR EPIDEMIOLOGY LABORATORY CAPACITY (ELC) SCHOOLS GRANT TO EXTEND THE TERM – PUBLIC HEALTH DEPARTMENT

WHEREAS, the Public Health Department has received a grant from the New York State Department of Health (NYSDOH) through Health Research Inc. authorized by Resolution No. 326-21 for the ELC Schools Grant in the total amount of \$819,546, that is federally funded from the Centers for Disease Control and Prevention, contract number 6NU50CK0005160208, HRI Contract # 6918-01, and

WHEREAS, Amendment #1 has extended the term from July 31, 2022 to July 31, 2023.

NOW, THEREFORE, BE IT RESOLVED, that the Chairman of the Legislature is hereby authorized to sign the grant amendment contract with Health Research, Inc., extending the term of said contract from July 31, 2022 to July 31, 2023.

RE: AUTHORIZE CONTRACT WITH VENESKY & COMPANY FOR JACK - TIME AND ACTIVITY TRACKING SYSTEM END USER LICENSE – PUBLIC HEALTH DEPARTMENT

WHEREAS, Schuyler County Public Health Department is required to document and track 100% of employee time and support claims for Article 6 State Aid and Grants contracts, and

WHEREAS, Venesky & Company has developed a cloud-based application specifically for New York State County Public Health Departments designed to conform to the Department of Health Time and Effort Reporting for Department of Health contracts, and

WHEREAS, the cost for the end user license is \$3,500, for a term of June 13, 2022 through December 31, 2023.

NOW, THEREFORE, BE IT RESOLVED, that the Chairman of the Legislature be hereby authorized to execute a contract with Venesky & Company for the Jack - Time and Activity Tracking System end user license for the Public Health Department for the term of June 13, 2022 through December 31, 2023, at a cost of \$3,500.00 funding available in account no. 001.4010.0532 – Computer Services, contract approved as to form by the Schuyler County Attorney.

RE: AUTHORIZE TRANSFER OF FUNDS FROM CONTINGENCY/AUTHORIZE AMENDING THE 2022 BUDGET FOR EARLY INTERVENTION-PUBLIC HEALTH DEPARTMENT

WHEREAS, Early Intervention Program costs are exceeding estimates for this year, and WHEREAS, these services and associated costs are mandated by the State of New York Department of Health, and

WHEREAS, Schuyler County is reimbursed 49% of these costs by New York State, and WHEREAS, the 2022 budget needs to be amended

NOW, THEREFORE, BE IT RESOLVED< that the Schuyler County Treasurer is hereby authorized to transfer the amount of \$15,300 from Contingency account no. 001.1990.0500 into Early Intervention Budget account no. 001.4054.0490, and

BE IT FURTHER RESOLVED, that the Schuyler County Treasurer is hereby authorized to amend the 2022 budget as follows:

<u>AMOUNT</u>	<u>ACCOUNT NO.</u>	<u>DESCRIPTION</u>
+\$30,000	001.4054.0490	Early Intervention expense
+\$14,700	001.4054.3401	Early Intervention State-Aid revenue